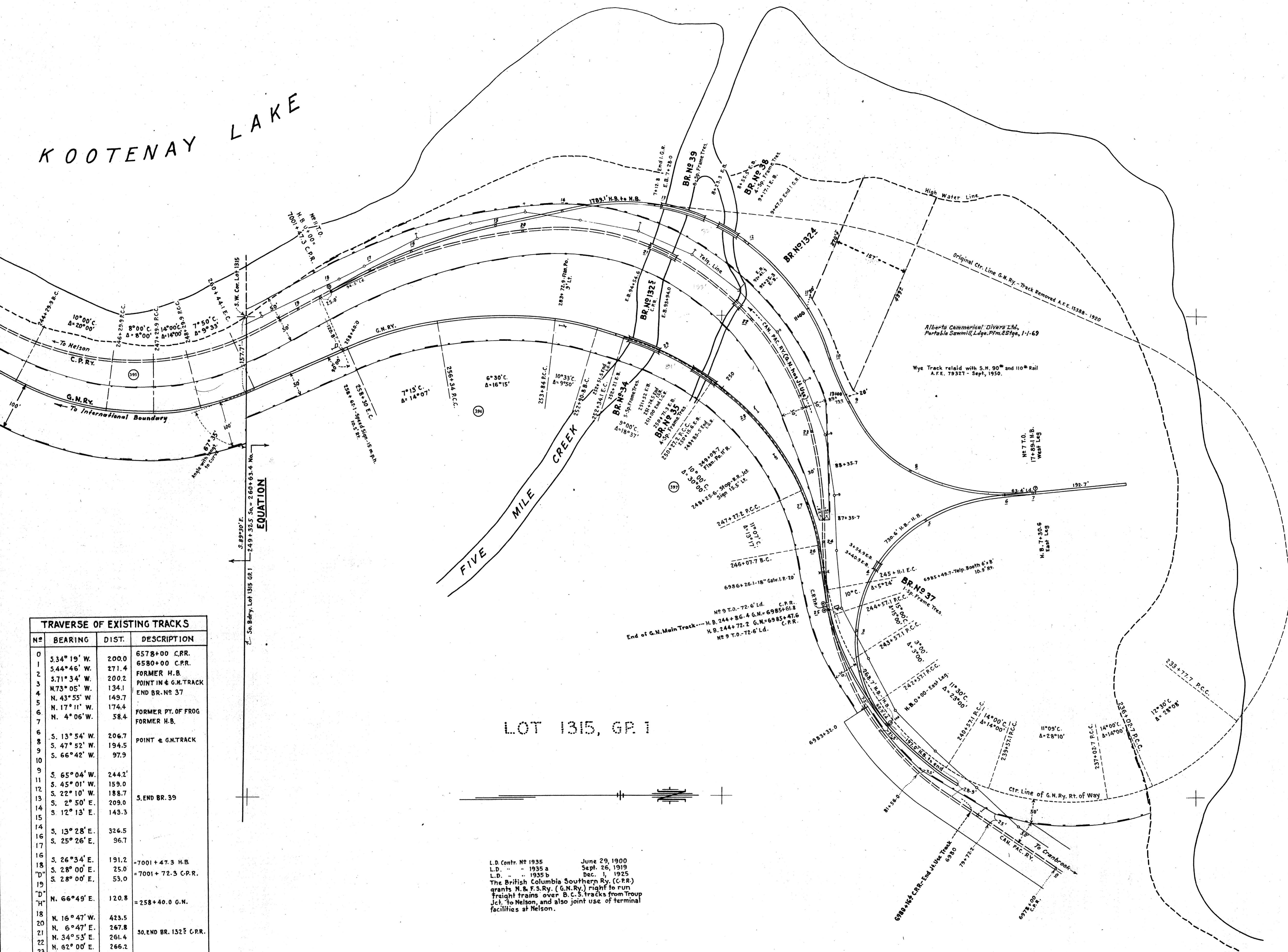


KOOTENAY LAKE



TRAVERSE OF EXISTING TRACKS			
N ^o	BEARING	DIST.	DESCRIPTION
0			6578+00 C.P.R.
1	S. 53° 19' W.	200.0	6580+00 C.P.R.
2	S. 54° 46' W.	271.4	FORMER H.B.
3	S. 71° 34' W.	200.2	POINT IN G.N. TRACK
4	N. 73° 05' W.	134.1	END BR. No 37
5	N. 43° 55' W.	149.7	
6	N. 17° 11' W.	174.4	FORMER PT. OF FROG
7	N. 4° 06' W.	58.4	FORMER H.B.
8	S. 13° 54' W.	206.7	POINT G.N. TRACK
9	S. 47° 52' W.	194.5	
10	S. 66° 42' W.	97.9	
11	S. 65° 04' W.	244.2	
12	S. 45° 01' W.	159.0	
13	S. 22° 10' W.	188.7	S. END BR. 39
14	S. 2° 50' E.	209.0	
15	S. 12° 13' E.	143.3	
16	S. 13° 28' E.	326.5	
17	S. 25° 26' E.	96.7	
18	S. 26° 34' E.	191.2	=7001+47.3 H.B.
19	S. 28° 00' E.	25.0	=7001+72.3 C.P.R.
20	S. 28° 00' E.	53.0	
21	N. 66° 49' E.	120.8	=258+40.0 G.N.
22	N. 16° 47' W.	423.5	
23	N. 6° 47' E.	267.8	
24	N. 34° 53' E.	261.4	30. END BR. 1324 C.P.R.
25	N. 62° 00' E.	266.2	
26	N. 83° 54' E.	231.9	
27	N. 84° 31' E.	373.6	H.B. 244+72.2 G.N. = 6985+47.6 C.P.R.
28	S. 80° 57' W.	126.9	
29	S. 78° 11' W.	226.5	
30	S. 57° 45' W.	223.8	
31	S. 34° 39' W.	227.0	N. END BR. 34

Traverse points with their respective numbers indicated thus: 28

LOT 1315, GR. 1

L.D. Contr. No 1935 June 29, 1900
 L.D. " " 1935 a Sept. 26, 1919
 L.D. " " 1935 b Dec. 1, 1925
 The British Columbia Southern Ry. (C.P.R.) grants N. & F.S. Ry. (G.N. Ry.) right to run freight trains over B.C.S. tracks from Troup Jct. to Nelson, and also joint use of terminal facilities at Nelson.

GREAT NORTHERN RY.
 BOUNDARY - TROUP JCT. SECTION
TROUP JCT.
 WEST KOOTENAY DIST., B. C.
 LOT 1315 GROUP 1.

Survey August, 1949. Sup'd Map 1641-1-9
 R/W Map RFI-3-3
 Profile FI-3-3
 SCALE 1" = 100 FT. APRIL 1951
 OFFICE OF CHIEF ENGINEER ST. PAUL, MINN.